



 2  1  1  D

Ratton Gardens, Eastbourne, BN20 9BT

£1,350 Per Calendar Month



# Oliver & Bailey

01424 834000 | 01424 533 555

Info@oliverbaileylettings.co.uk  
www.oliverbaileylettings.co.uk

**Entrance hallway**

**Living Room**

13'3" x 11'10" (4.06m x 3.61m)

**Kitchen**

11'6" x 10'9" (3.53m x 3.28m)

**Bedroom**

12'2" x 11'10" (3.71m x 3.63m)

**Bedroom**

10'9" x 9'8" (3.28m x 2.95m)

**Bathroom**

**Cloakroom**

**Private front garden**

**Communal gardens**



**Furnished Options: Unfurnished**

**Council Tax Band: C**

**Available Date: 22nd April 2026**

# Oliver & Bailey

---

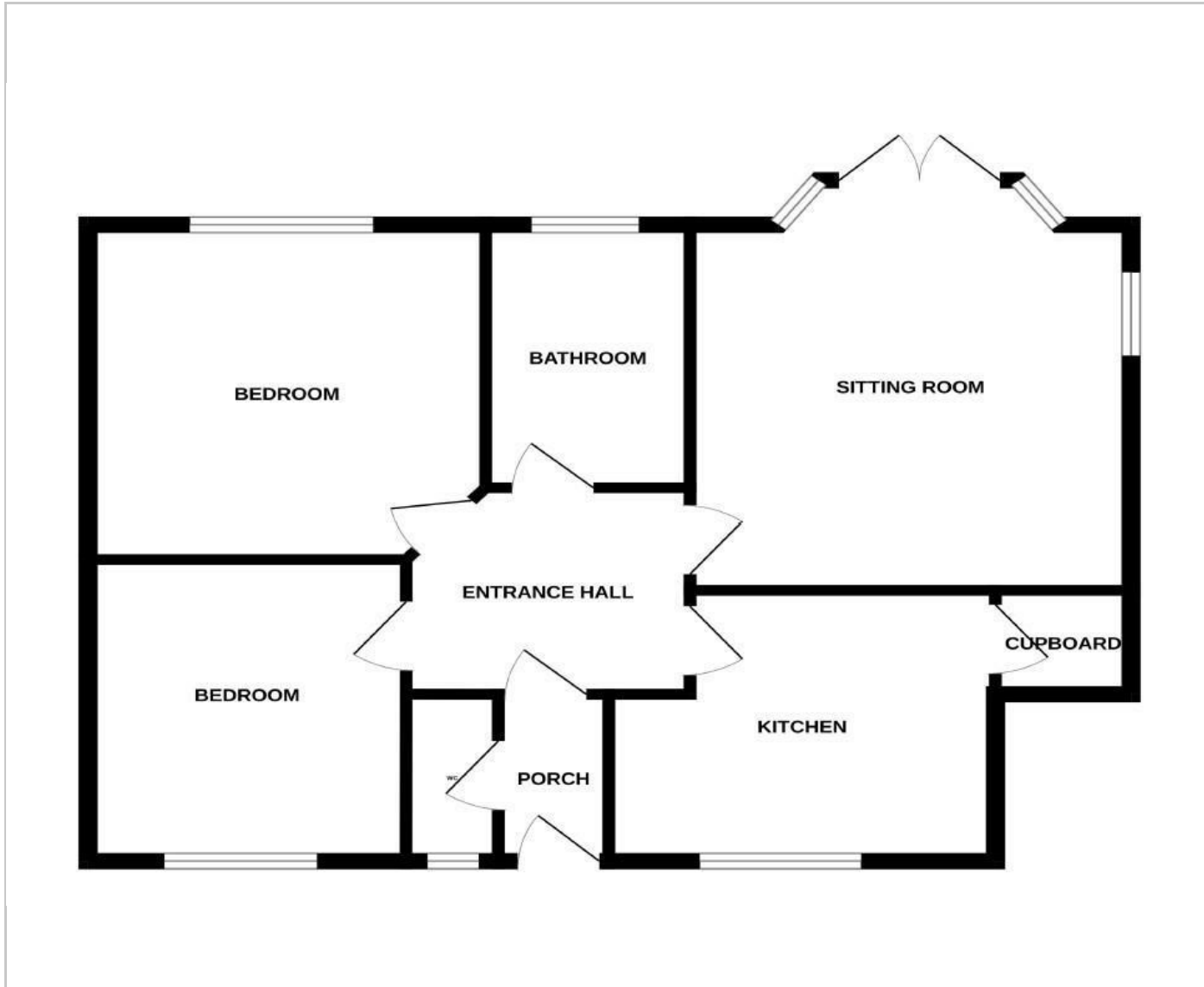
**POPULAR RATTON ESTATE SET WITHIN WELL MAINTAINED COMMUNAL GARDENS...** Call Acacia or Georgia at Oliver & Bailey to view this extremely well presented two bedroom ground floor apartment.

Finished to a high standard throughout, the apartment has been refurbished over recent years and benefits from its own private entrance.

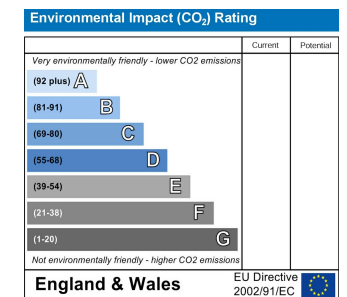
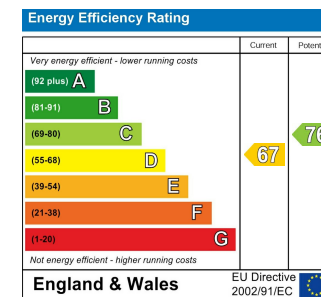
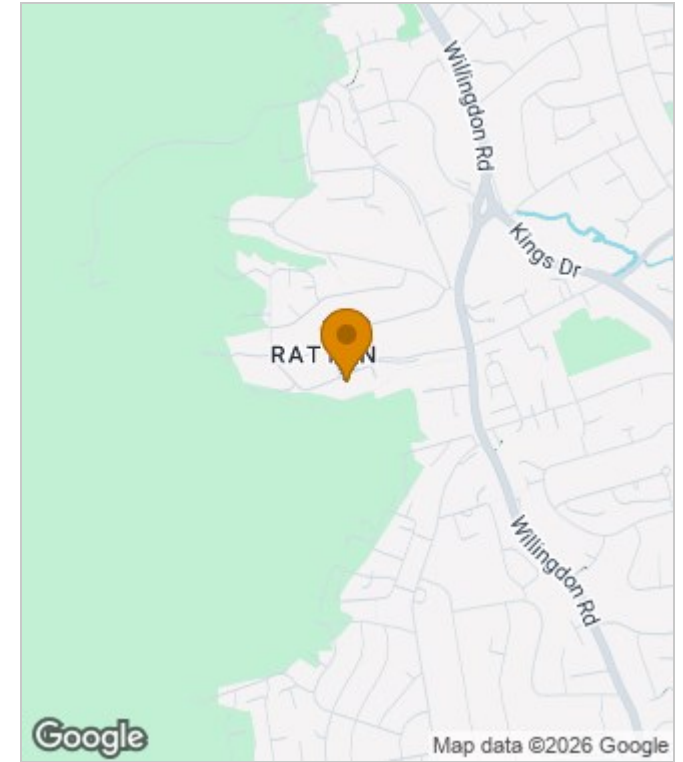
Comprising, spacious entrance hall, light filled sitting room with patio doors leading to the attractive communal gardens, modern and stylish kitchen with fitted appliances and breakfast bar, two double bedrooms with built in wardrobes, luxurious bathroom with panelled bath walk in shower cubicle and underfloor heating, there is also a further separate cloakroom.

Further benefits to the property are a private front garden, double glazing and gas central heating.

## FLOORPLAN



## AREA MAP



These particulars, whilst believed to be accurate are set out as a general outline only for guidance and do not constitute any part of an offer or contract. Intending purchasers should not rely on them as statements of representation of fact, but must satisfy themselves by inspection or otherwise as to their accuracy. No person in this firm's employment has the authority to make or give any representation or warranty in respect of the property.